

Počet dárců (TZ provádí pouze autologní transplantace v rámci jednoho operačního výkonu):

Počet dárců v roce 2014: 10

Množství tkáňových a buněčných přípravků:

1: Zpracovaných přípravků - 10

2: Nejsou distribuovány

3: Nejsou vyváženy

4: Nejsou skladovány

5: Nebyly vyřazeny

Celkový počet příjemců

Celkový počet příjemců: 9 bez závažné nežádoucí reakce

Produkty nejsou distribuovány k aplikacím mimo FNO.

Celkový počet dárců:

Celkový počet dárců: 10, počet odběrů 10

Množství tkání a buněk: 9 x odběr aspirátu kostní dřeně- specifikace viz příloha

1x odběr dárcovského lipoaspirátu tukové tkáně, který zpracován
k preklinickým testům

Materiál není skladován ani distribuován

Zpracoval: MUDr.Václav Procházka,PhD,MSc.

13.1.2015

Fakultní nemocnice Ostrava

Průběžný report výsledků DIALEG

Datové analýzy
Ing.Lubomír Pavliška

12. ledna 2015

Obsah

1 Pacienti	1
2 Výsledky biochemie	3
3 Výsledky hematologie	5
4 LDP	7
5 Markery kostní dřevě	9
6 Kaplan-Meier odhad	12
7 Meta analýza	13

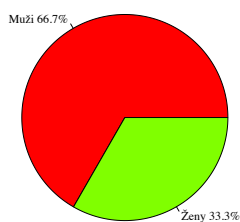
1 Pacienti

Přehledová tabulka kontrol pacientů a základní rozdělení pacientů podle skupin.

Počet pacientů: 37 z toho 7 amputací, 4 úmrtí
 Intervaly kontrol: vstupní, 1. měsíc, 3. měsíc, 6. měsíc, 12. měsíc.,
 24. měs.

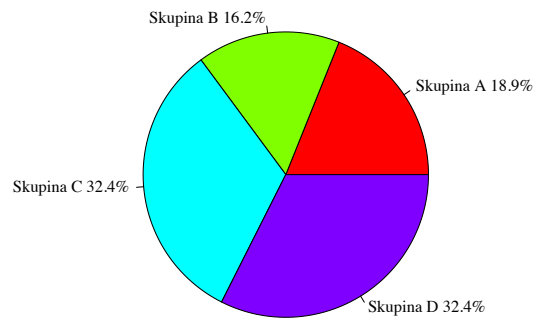
PacientID	Ročník	Pohlaví	Skupina	Datum.vstupní	Kon.1.měs.	Kon.3.měs.	Kon.6.měs.	Kon.12.měs.	Amputace	Kon.24.měs.	
1	1947	M	D	24.9.2012		22.10.2012	21.12.2012				NE
2	1949	M	A	15.10.2012	22.10.2012	28.11.2012	16.1.2013	17.4.2013		15.10.2014	ANO
3	1945	Ž	B	15.10.2012	22.10.2012	28.11.2012	16.1.2013	17.4.2013	21.10.2013	13.10.2014	NE
4	1954	M	B	6.12.2012	17.12.2012	10.1.2012	26.3.2013	5.6.2013	4.12.2013		ANO
5	1947	M	A	2.1.2013	14.1.2013	14.2.2013	10.4.2013	10.7.2013	27.1.2014		NE
6	1947	M	C	2.1.2013	14.1.2013	14.2.2013	10.4.2013	7.8.2013	7.2.2014		NE
7	1943	M	A	31.1.2013	22.2.2013						NE
8	1959	M	D	18.2.2013	22.2.2013	18.3.2013	24.5.2013	16.8.2014	21.2.2014		NE
9	1936	M	C	6.3.2013	19.3.2013	26.4.2013	3.6.2013	11.9.2013	17.3.2014		NE
10	1948	M	A	8.4.2013	23.4.2013	17.5.2013	3.7.2013	16.10.2013	30.4.2014		NE
11	1975	M	C	3.4.2013	22.4.2013	17.5.2013	17.7.2013	16.10.2013	9.5.2014		NE
12	1940	Ž	D	19.4.2013	30.4.2013	14.6.2013	19.7.2013	14.10.2013	28.4.2014		NE
13	1951	Ž	A	13.5.2013	20.5.2013	19.6.2013	16.8.2013	18.11.2013	19.5.2014		NE
14	1950	M	C	10.7.2013	22.7.2013	16.8.2013	18.10.2013	15.1.2014	14.7.2014		NE
15	1931	M	D	8.8.2013	13.8.2013	10.9.2013	8.11.2013	7.2.2014	8.8.2014		NE
16	1965	M	C	9.8.2013	19.8.2013	20.9.2013	15.11.2013	17.2.2014			NE
17	1954	M	C	6.9.2013	23.9.2013	23.10.2013	20.12.2013	14.3.2014	17.9.2014		NE
18	1953	M	D	10.10.2013	18.10.2013	14.11.2013	10.1.2014	4.4.2014	13.10.2014		NE
19	1949	M	C	11.10.2013	21.10.13	18.11.2013	17.1.2014	9.4.2014	17.10.2014		NE
20	1963	M	B	1.11.2013	18.11.2013	13.12.2013	17.2.2014	23.5.2014	3.11.2014		ANO
21	1944	M	D	4.12.2013	10.12.2013	15.1.2014					ANO
22	1947	M	D	9.12.2013	18.12.2013	15.1.2014	7.3.2014	7.5.2014			NE
23	1959	Ž	C	12.12.2013	18.12.2013	15.1.2014	10.3.2014	11.6.2014	8.12.2014		NE
24	1954	M	C	6.1.2014	20.1.2014	19.2.2014	18.4.2014	23.7.2014			NE
25	1947	M	A	6.1.2014	20.1.2014	28.2.2014	18.4.2014	18.7.2014			NE
26	1934	M	D	19.2.2014	24.2.2014	26.3.2014	9.6.2014				ANO
27	1939	Ž	B	19.2.2014	24.2.2014	26.3.2014	23.5.2014	15.8.2014			NE
28	1962	M	C	19.2.2014	24.2.2014	28.3.2014	23.5.2014	18.8.2014			NE
29	1956	M	D	24.3.2014	31.3.2014			3.12.2014			ANO
30	1945	M	D	24.3.2014	27.3.2014	30.4.2014	23.6.2014				NE
31	1950	M	A	27.2.2014	31.3.2014	22.5.2014	23.6.2014	22.9.2014			NE
32	1945	M	B	5.3.2014	22.4.2014	19.5.2014	18.7.2014	10.10.2014			NE
33	1940	Ž	D	14.7.2014	23.7.2014	15.8.2014	17.10.2014				NE
34	1961	M	C	15.7.2014	21.7.2014	18.8.2014	20.10.2014				NE
35	1966	M	C	31.7.2014	4.8.2014	3.9.2014	31.10.2014				NE
36	1951	M	B	7.10.2014	10.10.2014	21.11.2014					ANO
37	1952	M	D	3.12.2014	9.12.2014	5.1.2015					NE

Pacienti muži – ženy



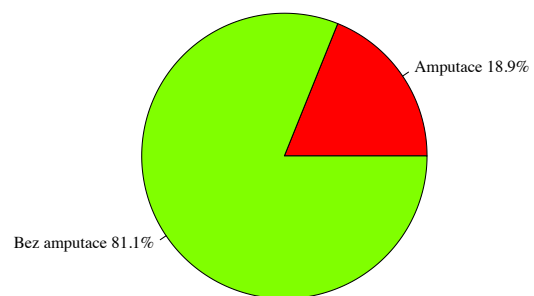
Obrázek 1: Poměr mužů a žen sledovaných pacientů

Pacienti podle skupin



Obrázek 2: Poměr pacientů ve skupinách A,B,C,D

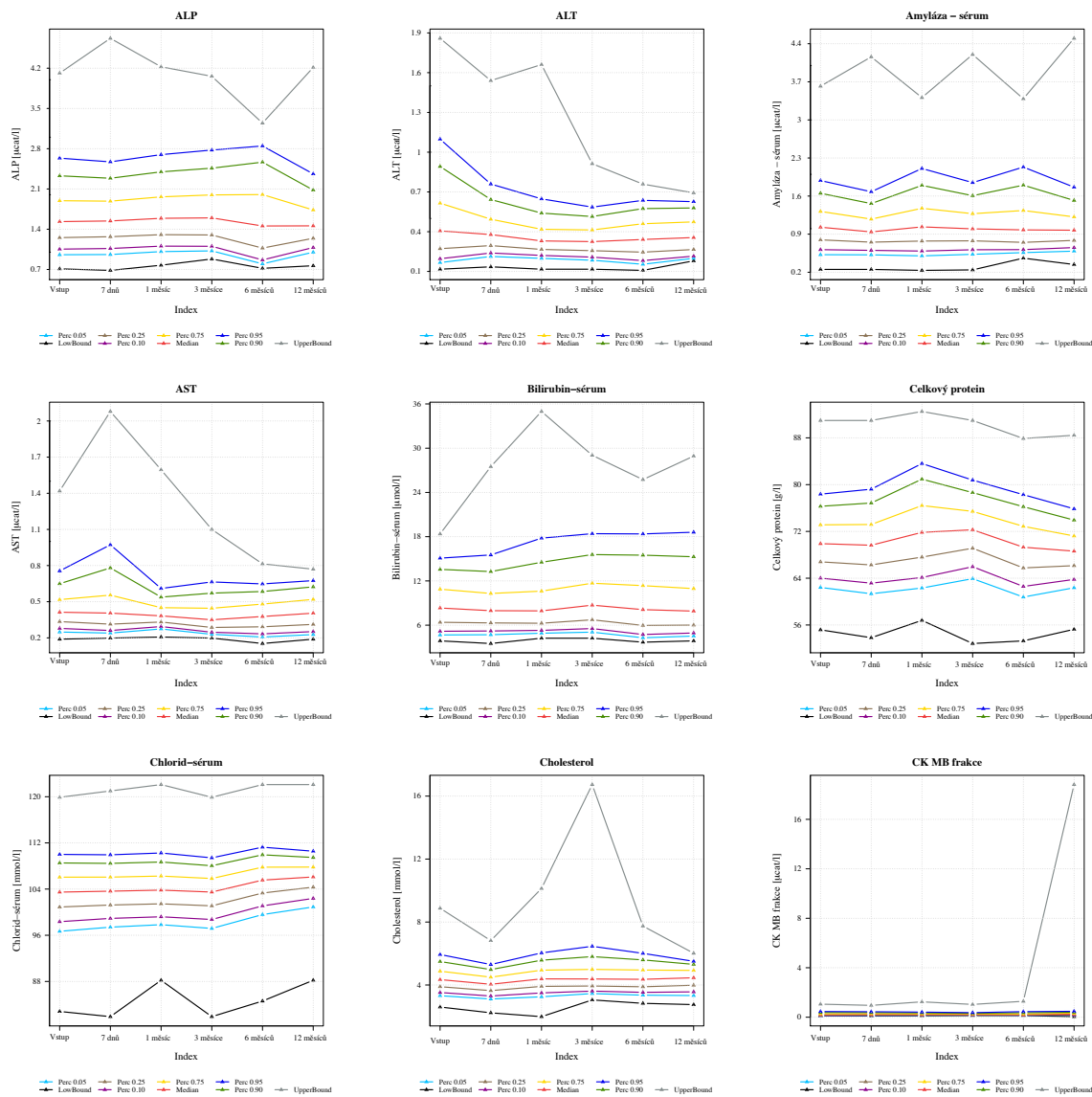
Pacienti amputace

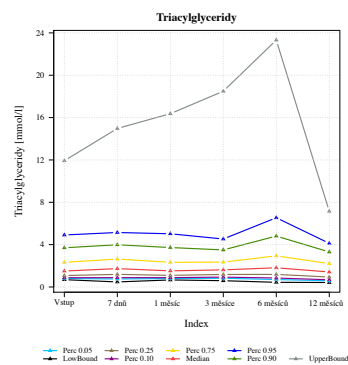
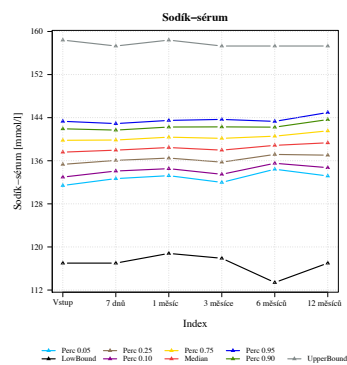
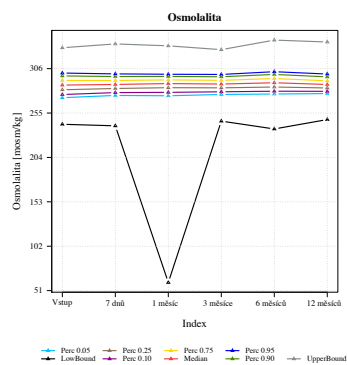
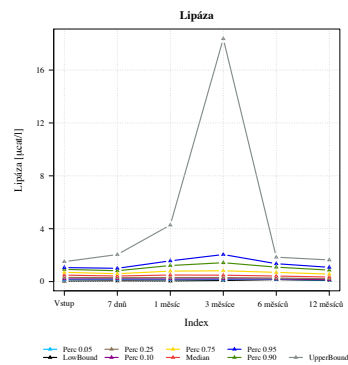
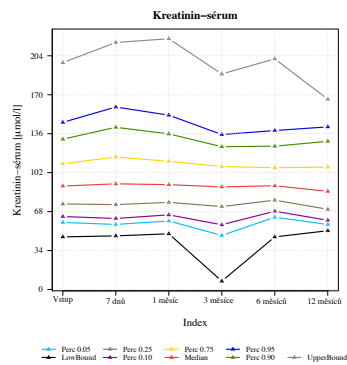
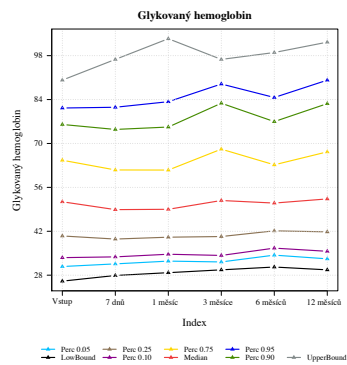
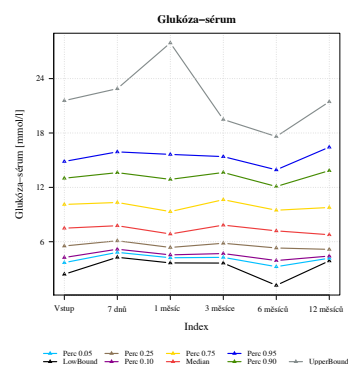
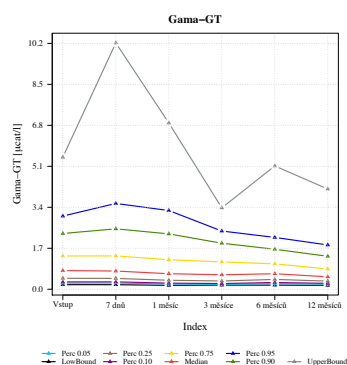
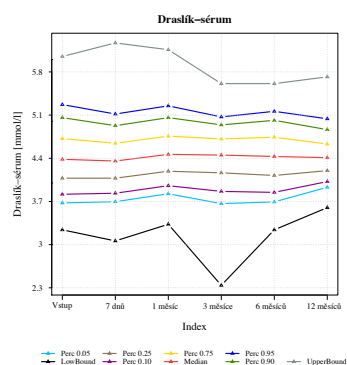
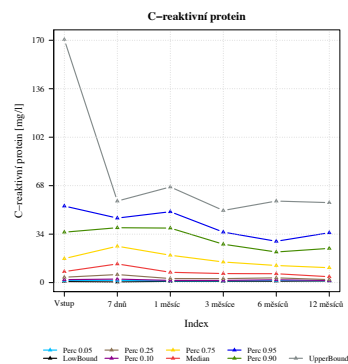
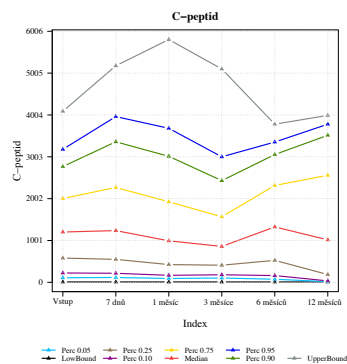
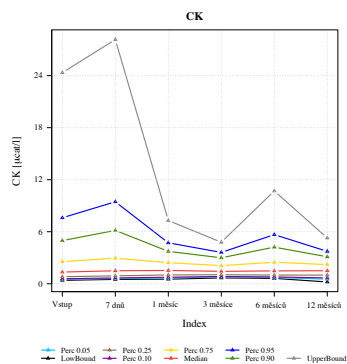


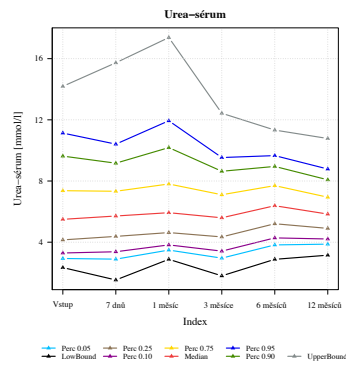
Obrázek 3: Poměr amputovaných a neamputovaných pacientů

2 Výsledky biochemie

Biochemické výsledky jsou v podobě trendů hodnot jednotlivých látek v časovém harmonogramu dosud provedených kontrol.

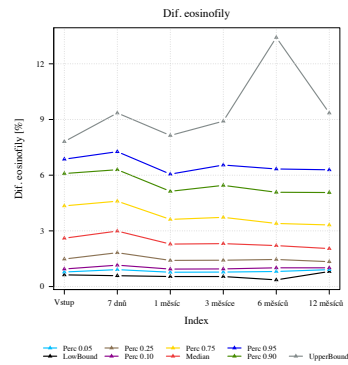
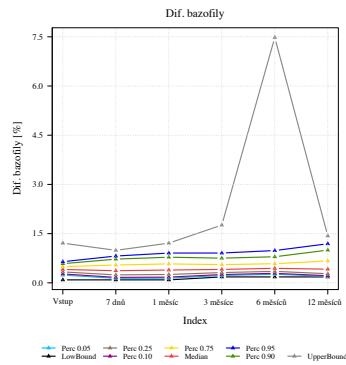
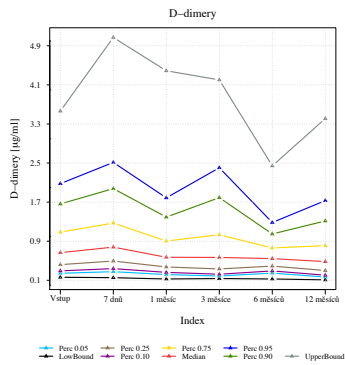
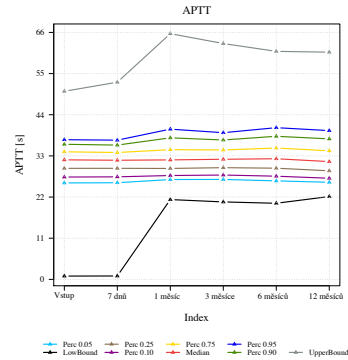
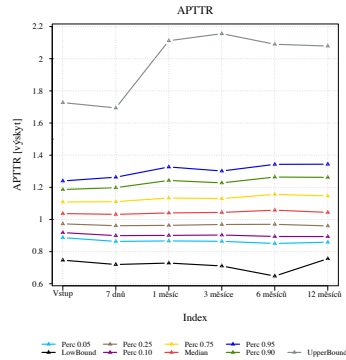
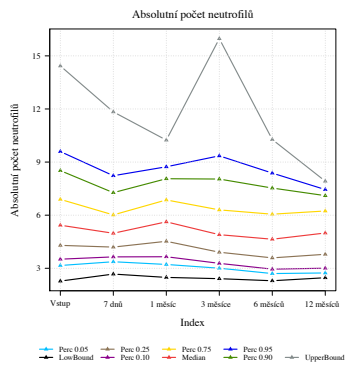


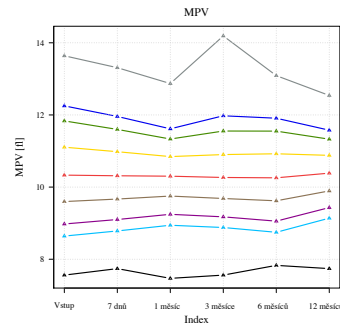
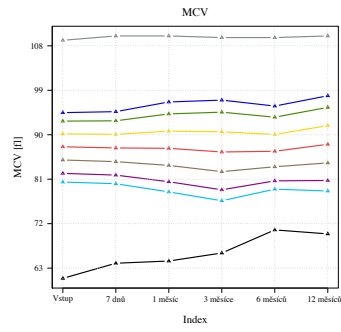
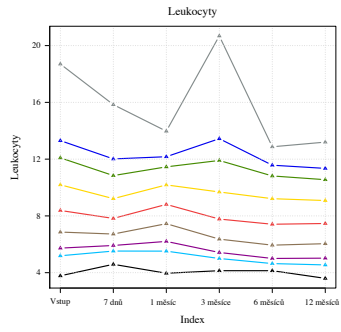
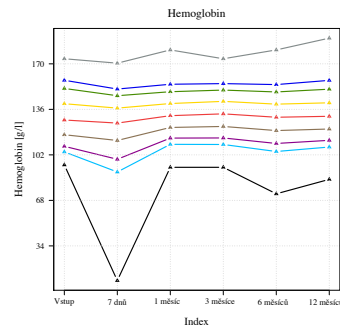
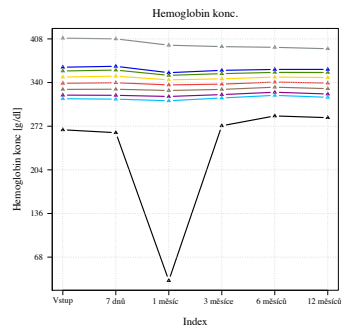
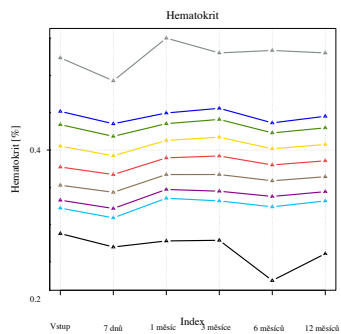
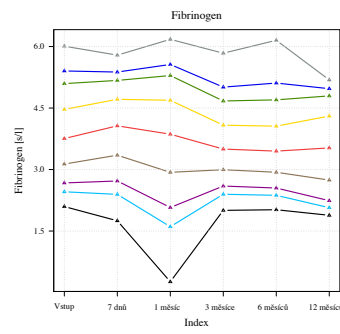
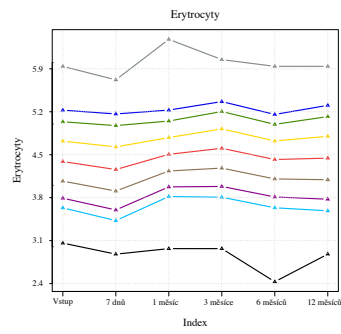
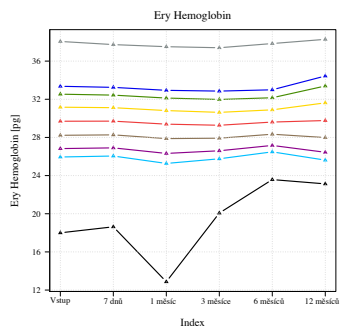
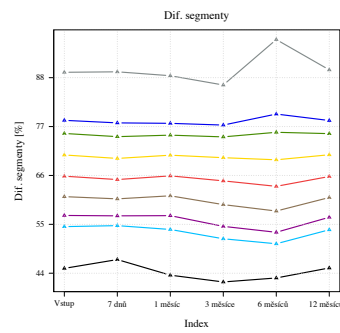
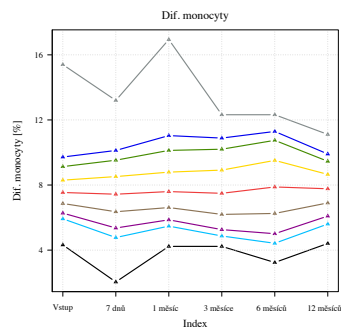
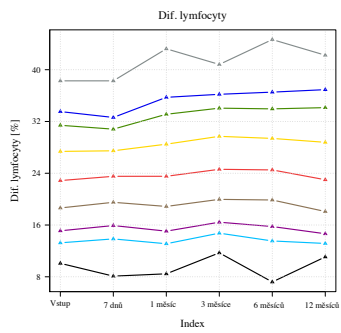


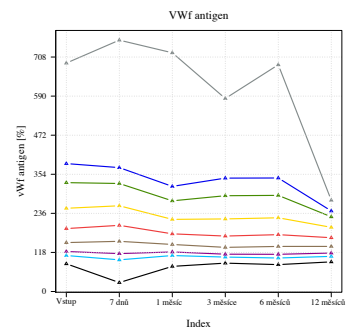
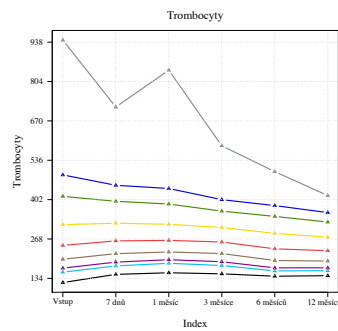
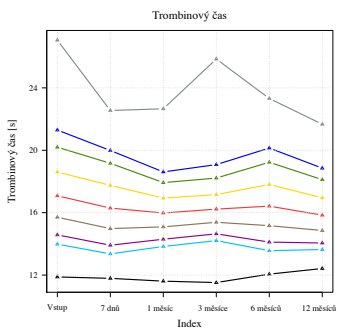
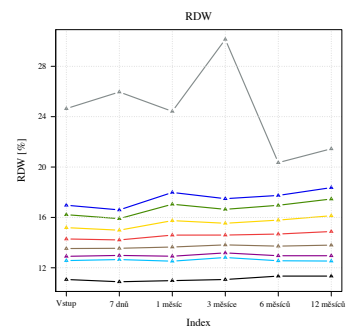
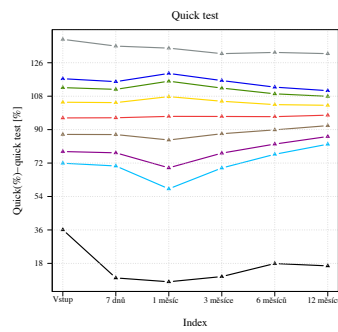
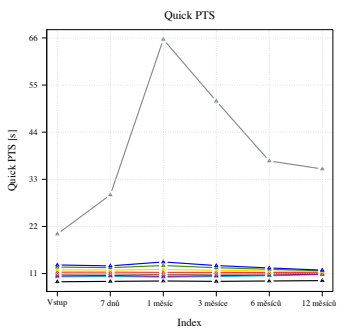
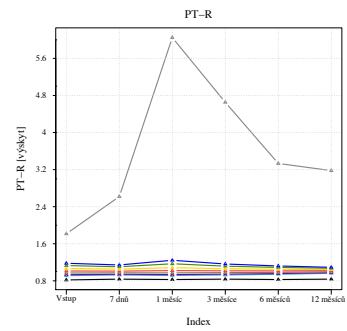
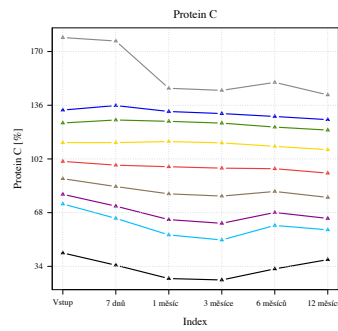
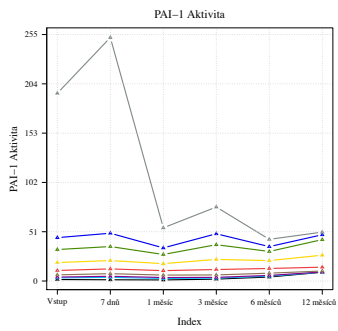


3 Výsledky hematologie

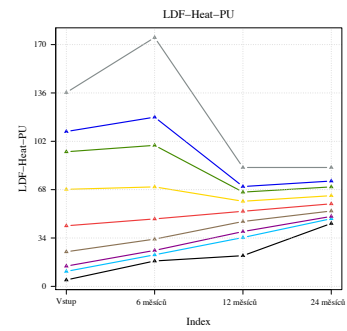
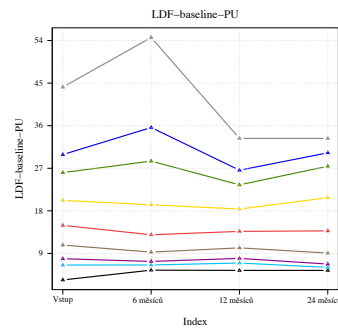
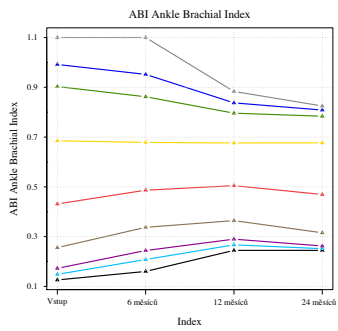
Hematologické výsledky jsou v podobě trendů hodnot jednotlivých látek v časovém harmonogramu dosud provedených kontrol.

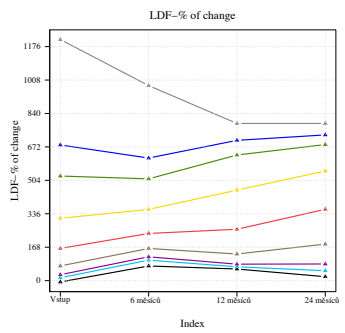




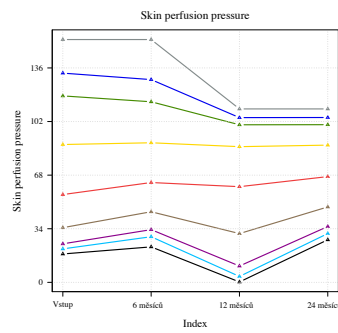


4 LDP

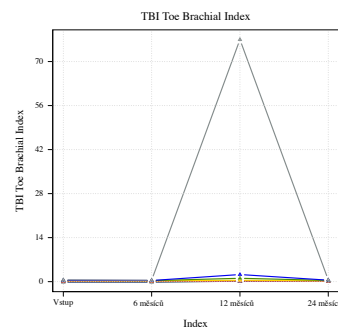




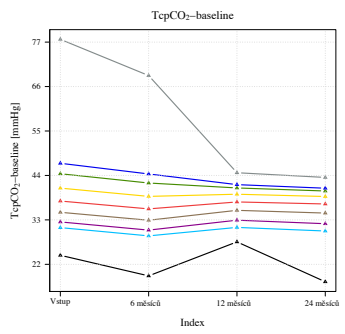
Legend: Perc 0.05, Perc 0.25, Perc 0.75, Perc 0.95, Low Bound, Perc 0.10, Median, Perc 0.90, UpperBound



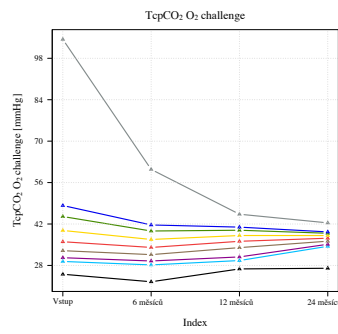
Legend: Perc 0.05, Perc 0.25, Perc 0.75, Perc 0.95, Low Bound, Perc 0.10, Median, Perc 0.90, UpperBound



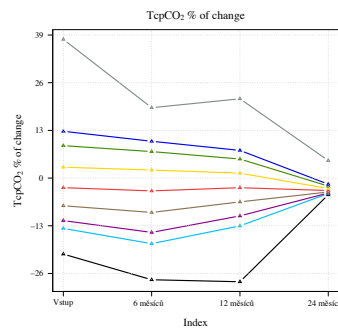
Legend: Perc 0.05, Perc 0.25, Perc 0.75, Perc 0.95, Low Bound, Perc 0.10, Median, Perc 0.90, UpperBound



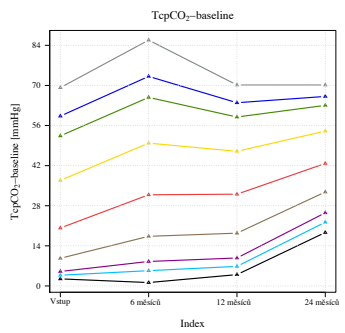
Legend: Perc 0.05, Perc 0.25, Perc 0.75, Perc 0.95, Low Bound, Perc 0.10, Median, Perc 0.90, UpperBound



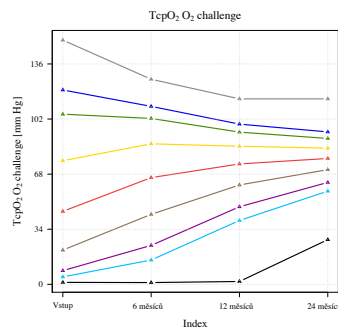
Legend: Perc 0.05, Perc 0.25, Perc 0.75, Perc 0.95, Low Bound, Perc 0.10, Median, Perc 0.90, UpperBound



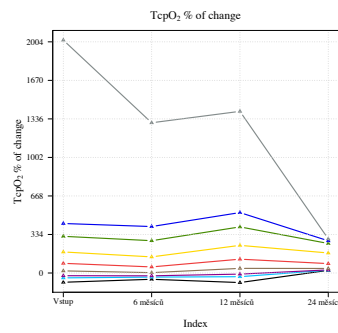
Legend: Perc 0.05, Perc 0.25, Perc 0.75, Perc 0.95, Low Bound, Perc 0.10, Median, Perc 0.90, UpperBound



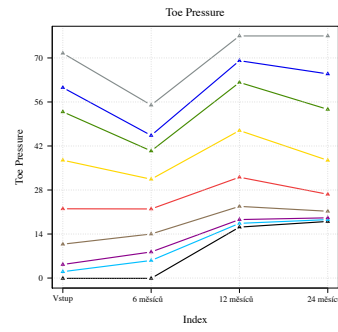
Legend: Perc 0.05, Perc 0.25, Perc 0.75, Perc 0.95, Low Bound, Perc 0.10, Median, Perc 0.90, UpperBound



Legend: Perc 0.05, Perc 0.25, Perc 0.75, Perc 0.95, Low Bound, Perc 0.10, Median, Perc 0.90, UpperBound



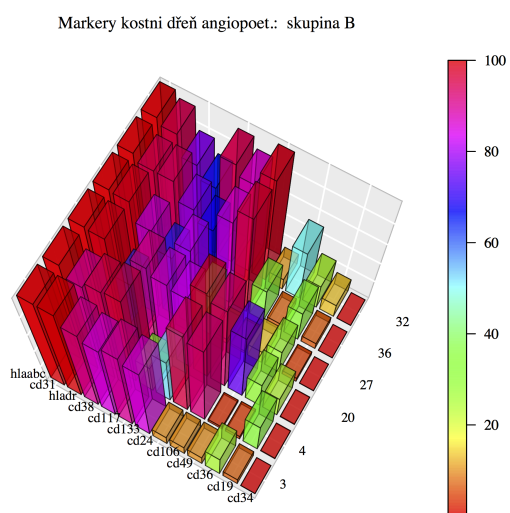
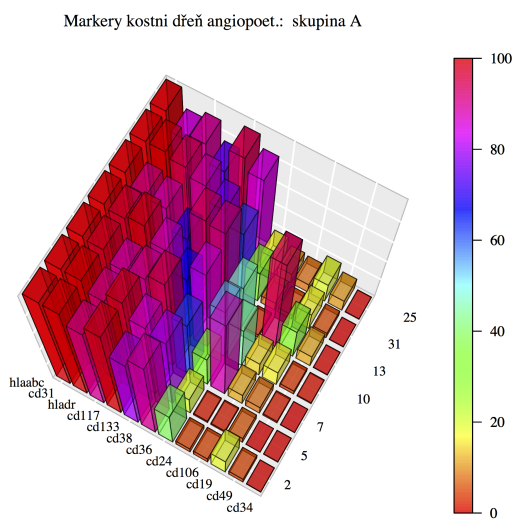
Legend: Perc 0.05, Perc 0.25, Perc 0.75, Perc 0.95, Low Bound, Perc 0.10, Median, Perc 0.90, UpperBound



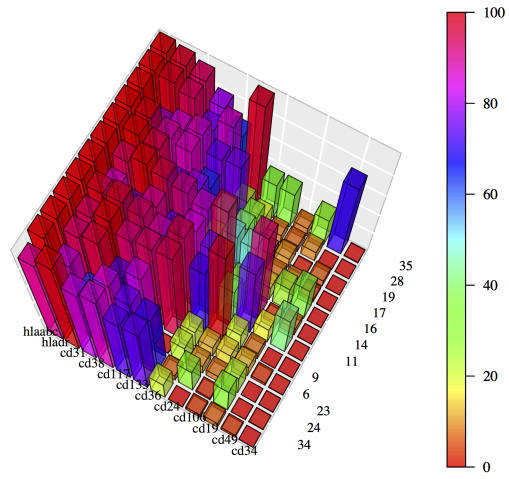
Legend: Perc 0.05, Perc 0.25, Perc 0.75, Perc 0.95, Low Bound, Perc 0.10, Median, Perc 0.90, UpperBound

5 Markery kostní dřevě

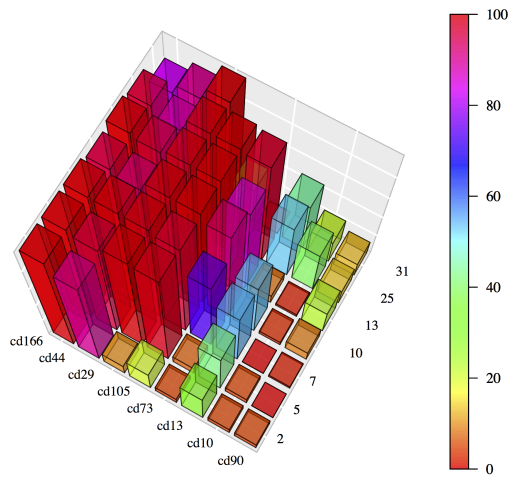
Zobrazení skupin A,B,C.



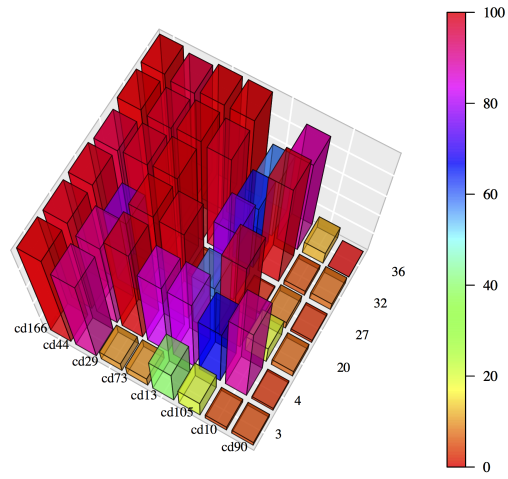
Markery kostni dřeň angiopoet.: skupina C



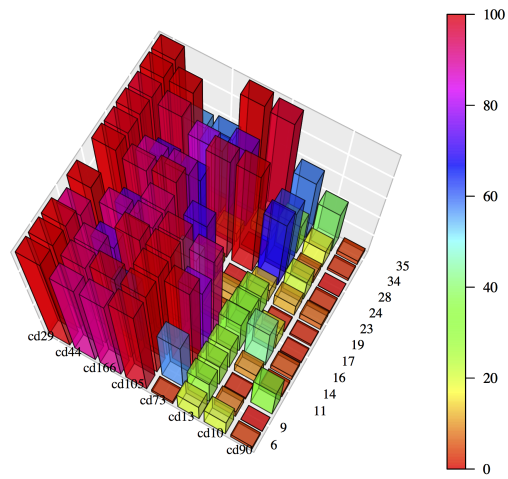
Markery kostni dřeň mesenchym.: skupina A



Markery kostni dřei mesenchym.: skupina B

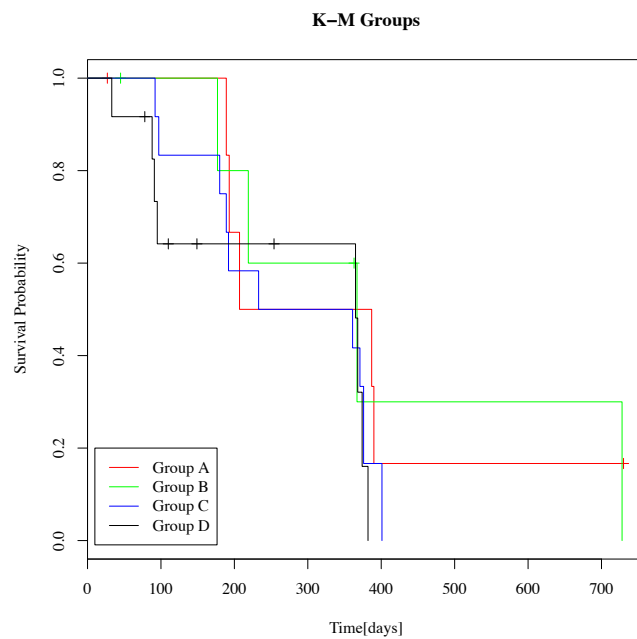
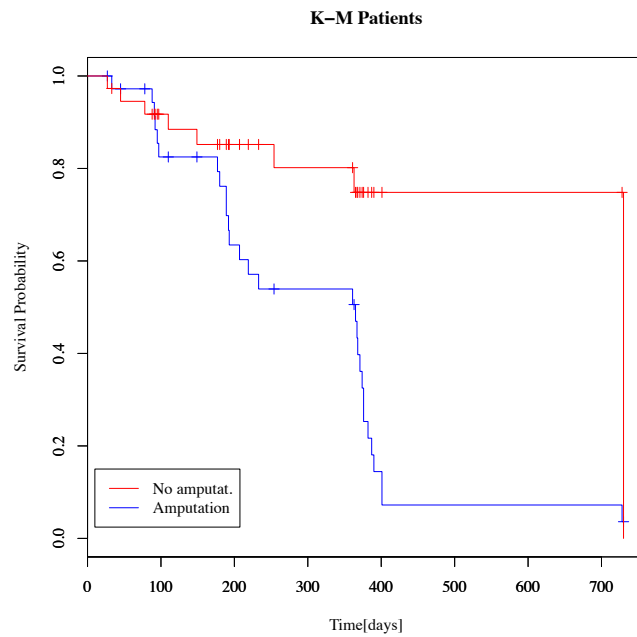


Markery kostni dřei mesenchym.: skupina C



6 Kaplan-Meier odhad

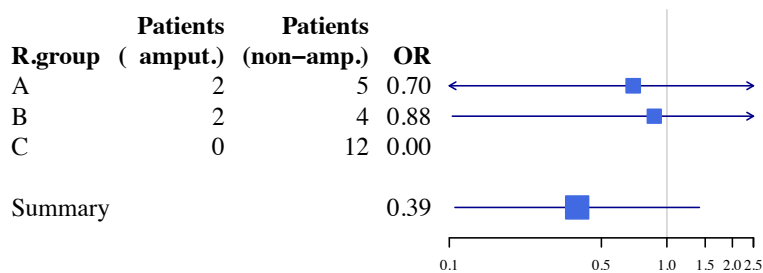
Odhad přežití podle metody Kaplan-Meier je provedena pro dva případy. První obrázek je pro všechny pacienty rozdělené na amputované a neamputované a druhý případ je odhad podle skupin A, B, C, D.



7 Meta analýza

Grafické porovnání konfidenčních intervalů skupin A,B,C vůči kontrolní skupině D pomocí meta analýzy zobrazené OR (odds ratio míry efektu) grafem (tzv. "forest plot"). Podle testu heterogenity (Chi-kvadrát) je ale statistická významnost malá $p\text{-value} > 0,1$. Skupina C je nevyhodnotitelná, protože neobsahuje ani jeden exponovaný prvek (žádná amputace ve skupině C).

```
Fixed effects ( Mantel-Haenszel ) Meta-Analysis
Call: meta.MH(ntrt = ntrt, nctrl = nctrl, ptrt = ptrt, pctrl = pctrl,
  conf.level = 0.95, names = names)
Mantel-Haenszel OR =0.41    95% CI ( 0.1, 1.71 )
Test for heterogeneity:  $X^2( 1 ) = 0.67$  ( p-value 0.4138 )
```



Obrázek 4: OR graf

Reference

- [1] R-projekt <http://www.r-project.org/>
- [2] Seznam literatury <http://www.r-project.org/doc/bib/R-books.html>
- [3] Univerzity s programem R <http://www.stat.auckland.ac.nz/uoa/sw-the-r-project>
- [4] Publikace R <http://www-stat.stanford.edu/~jmc4/pub.html>
- [5] Matt Berriman: Little Book of R for Biomedical Statistics (<http://a-little-book-of-r-for-biomedical-statistics.readthedocs.org/en/latest/src/biomedicalstats.html>)
- [6] Paul Teetor: R Cookbook, O'Reilly, 2011
- [7] Rob Kabacoff: R in action, Manning, 2010
- [8] Curran, J. Michael: Introduction to Data Analysis with R for Forensic Scientists, CRC Press, 2011
- [9] John Verzani: Using R for Introductory Statistics, Chapman & Hall/CRC, 2005
- [10] Laura Chihara, Tim Hesterberg: Mathematical Statistics with Resampling and R, Wiley, 2011
- [11] Hrishi Mittal: R Graphs Cookbook, Packt Publishing, 2011
- [12] John M. Quick: The Statistical Analysis with R Beginners Guide, Packt Publishing, 2010
- [13] Andrew P. Robinson, Jeff D. Hamann: Forest Analytics with R, Springer, 2010
- [14] Kovanic P., *Gnostical Theory of Individual Data*, Problems of Control and Information Theory (P.C.I.T.) 13, 4 (1984), 259-274
- [15] Kovanic P., *Gnostical Theory of Small Samples of Real Data*, Problems of Control and Information Theory 13 (1984), 5, 303-319.
- [16] Kovanic P., *On Relations between Information and Physics*, Problems of Control and Information Theory 13 (1984), 6, 383-399.
- [17] Kovanic P., *Gnostická teorie neurčitých dat*, (Gnostic Theory of Uncertain Data), In Czech, doctor (DrSc.) dissertation, The Institute of Information Theory and Automation, Czechoslovak Academy of Sciences, Prague (1990), 161 s.
- [18] Mathematical gnostics <http://www.math-gnostics.com/>